



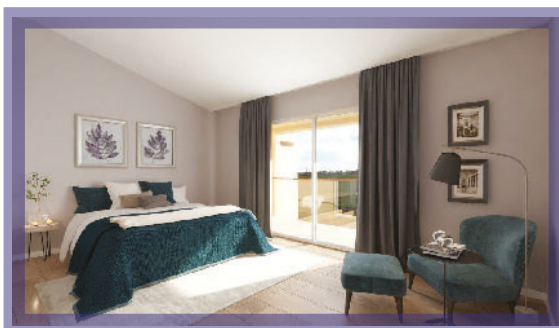
## CASA DAS OLIVEIRAS

House with 410 m<sup>2</sup> of total construction area, of which 370 m<sup>2</sup> are gross floor area and 40 m<sup>2</sup> terrace and balconies.

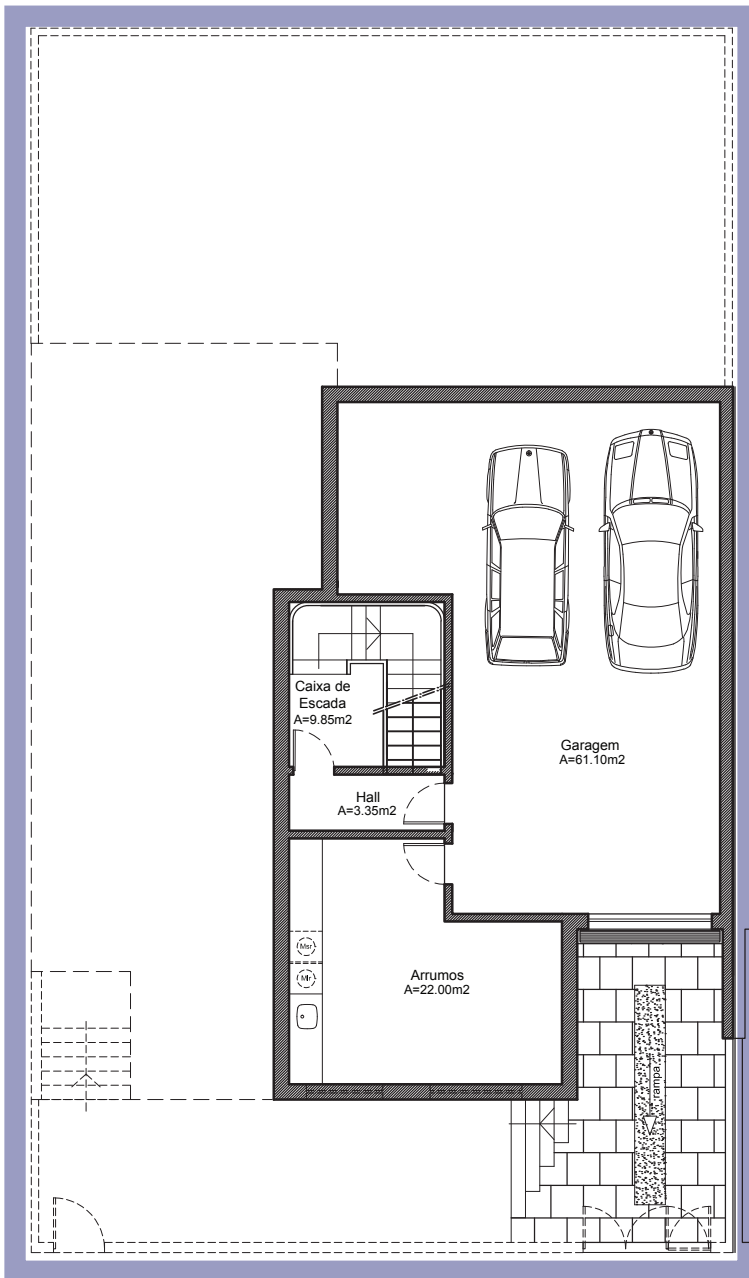
This house has a semi-basement with direct windows, a large garage, car treatment area and several store rooms.

On the ground floor, it was created a small lobby with direct access to an office and one living room with about 60 m<sup>2</sup>. The kitchen has a food confection area and another one of meals. There is also a ground-floor suite that can be used by older family members or visitors, when necessary.

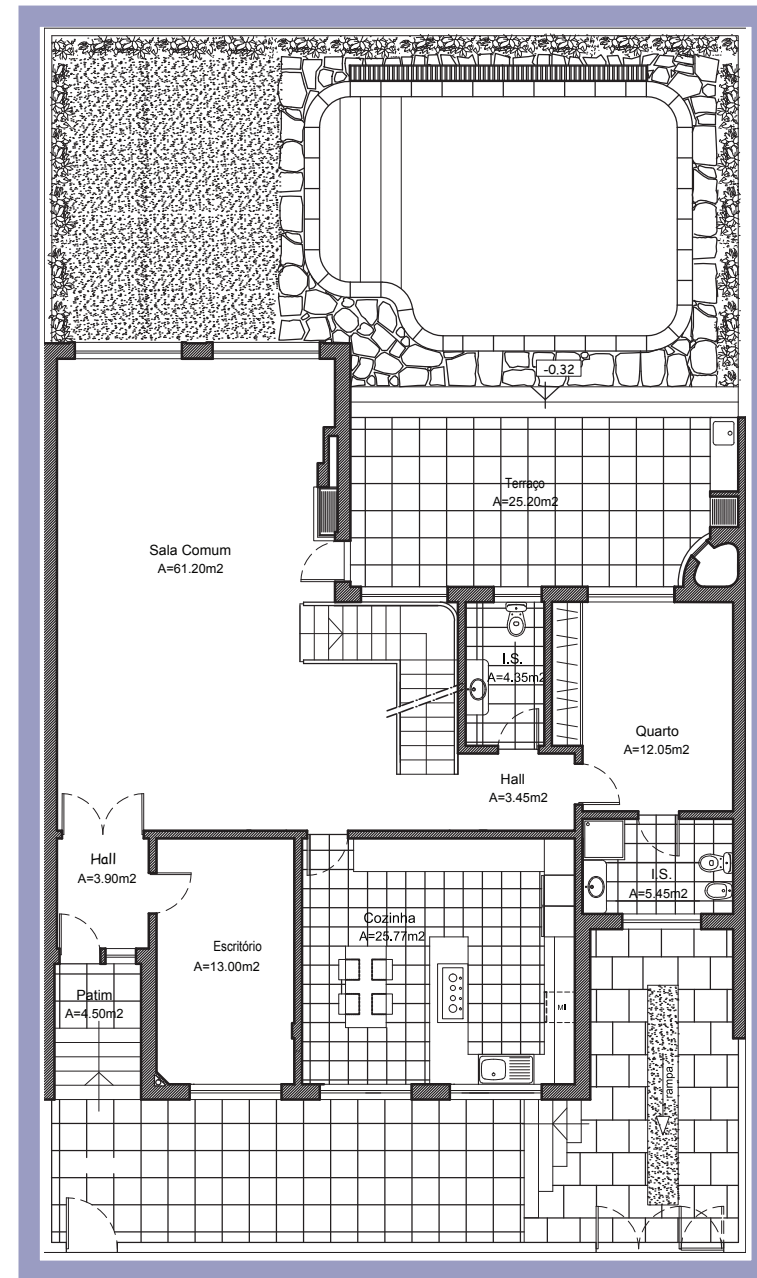
The first floor has a mezzanine with view over the living room and its own surrounding landscape, a master suite and two additional bedrooms with a bathroom to support them.



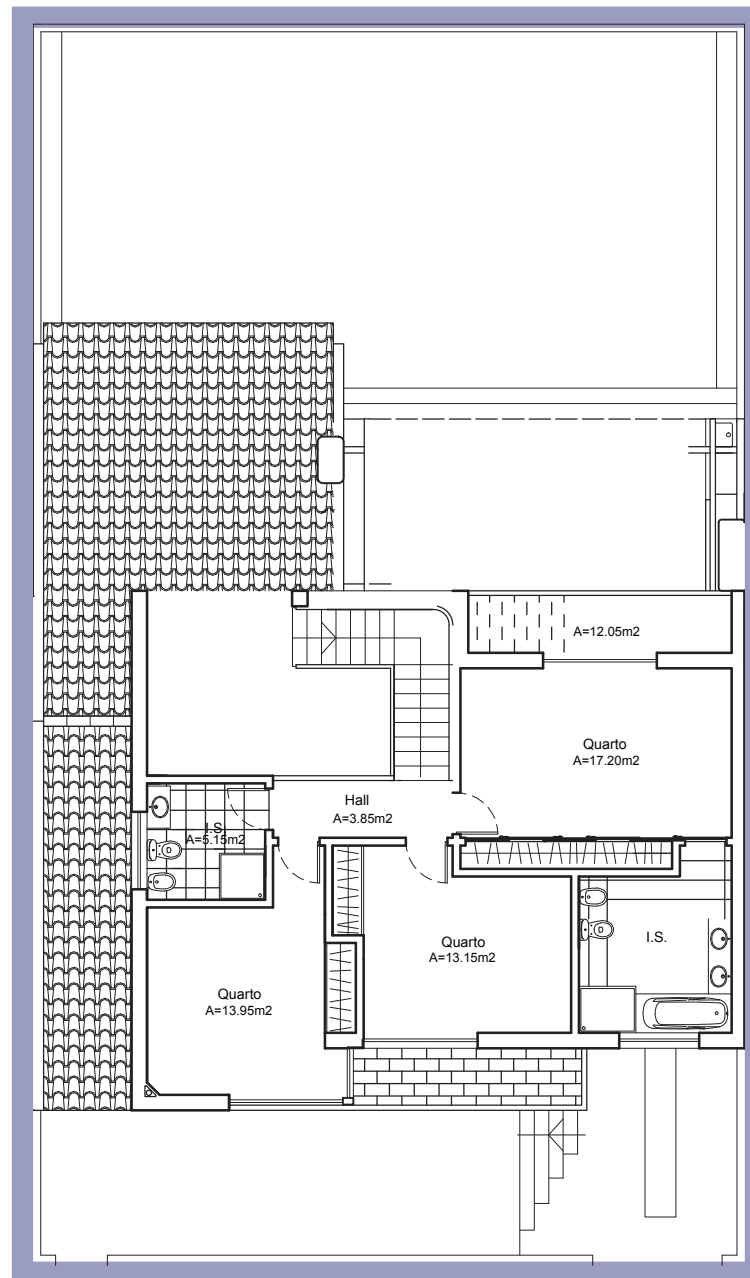
# CASA DAS OLIVEIRAS



Planta Cave



Planta R/c



Planta 1.º andar