

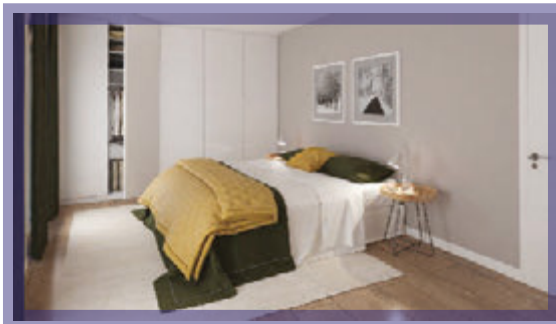
CASA DOS PINHEIROS

House with 223.50 m² of total construction area, of which 172.80 m² are gross floor area and 50.70 m² are covered parking, terraces and balconies.

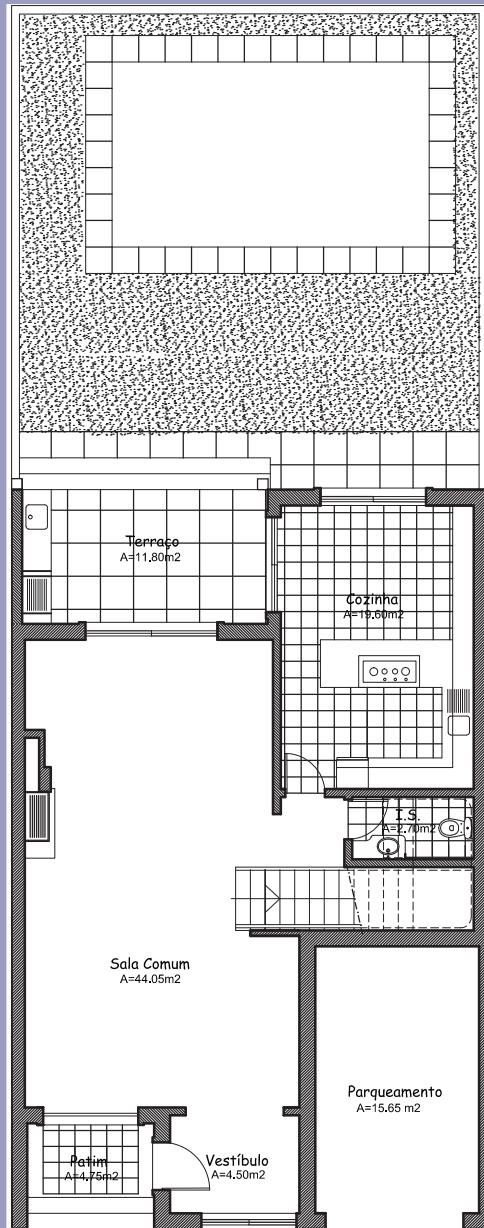
House of contemporary design, integrates classic materials such as wood, painted iron, wooden pergolas with border to white concrete, with large windows to capture the magnificent light of the place.

The functionality of the houses becomes evident with the ground floor as social, playful and service areas and the first floor with the bedrooms.

To highlight the easy connection of living room to the kitchen that lets you share between the whole family the meal confection.



Planta R/c



Planta 1.º andar

